



Schweizerische Eidgenossenschaft
Confédération suisse
Confederazione Svizzera
Confederaziun svizra

Bundesamt für Raumentwicklung ARE
Office fédéral du développement territorial ARE
Ufficio federale dello sviluppo territoriale ARE
Uffizi federal da svilup dal territori ARE

Cercle Indicateurs

Sustainable Indicators at regional level

Jean-Blaise Trivelli, ARE
Prague, 01.03.2016



Accountabilities and implementation of Sustainable Development

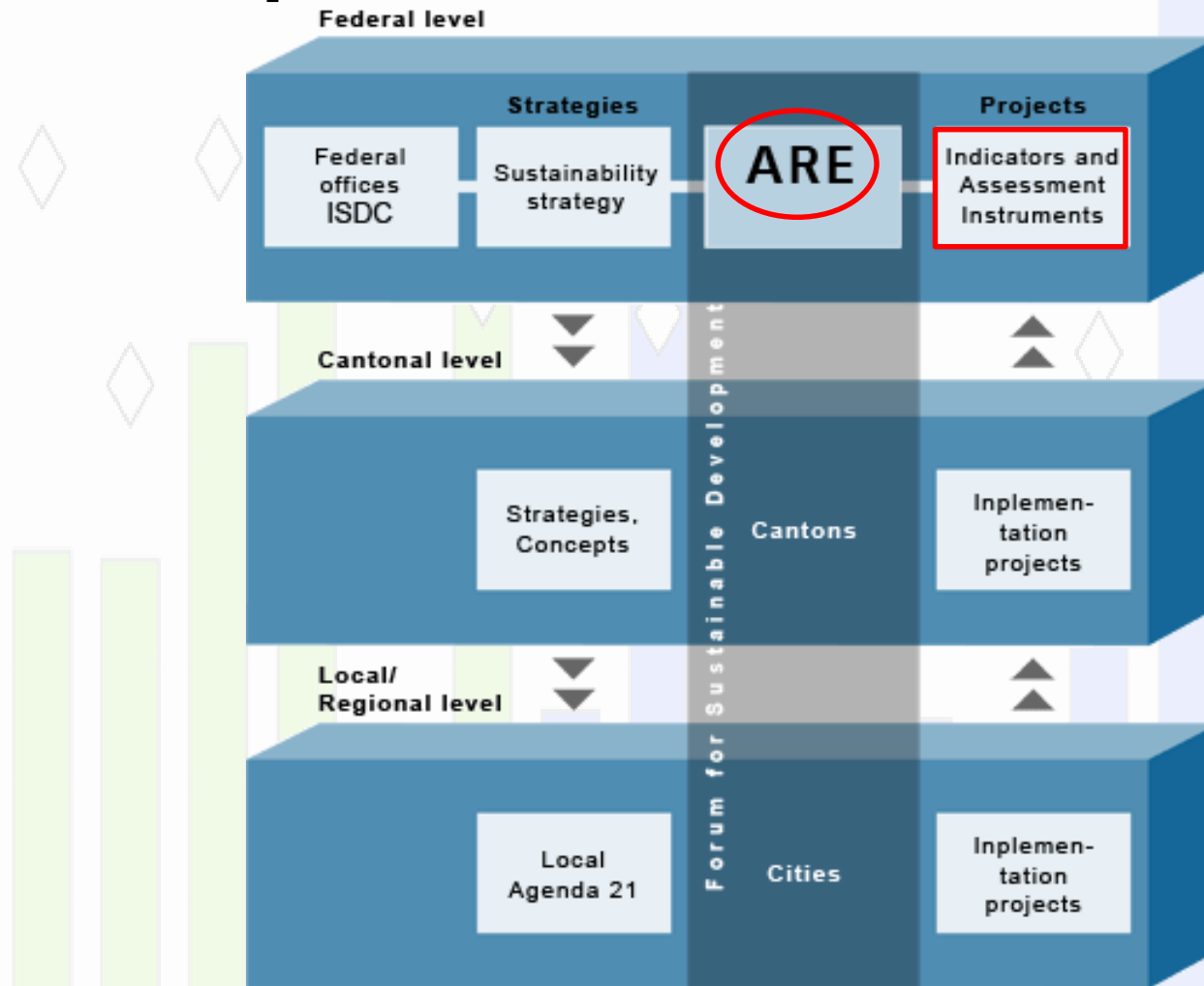
Federal Council (executive power) has supreme political responsibility for Switzerland's sustainability policy

Federal Council has given the **Federal Office for Spatial Development (ARE)** the task of:

- **Coordinating** the implementation of the federal sustainable development strategy
 - **Promote** sustainable development;
 - Develop national / regional sustainability **indicators**;
 - Set up projects (federal administration as a **role model**);
 - **Support** the cantons and municipalities in the implementation of sustainable development.



Implementation of Sustainable Development





2 systems of sustainability Indicators

MONET

National level

75 Indicators

Indicators used for

- Sustainable Development **Strategy**
- **Legislative** programs
- Sustainable Development **reports**

CERCLE INDICATEURS

Regional level
(cantons + cities)

32 Indicators

Indicators used for

- Management **reports**
- **Statistical** yearbooks
- **Legislative** programs
- Presentations / **reports** on Sustainable Development



Cercle Indicateurs

Main goals

To assess the **current state** of sustainable development and the **evolution** over time in terms of political strategy

- Measure the **current status** of sustainability, indicate **trends over time** and identify areas for action (*monitoring*);
- **Enable comparisons** (*benchmarking*), identify weakness and strength;
- **Initiate debate** between stakeholders in society about the goals of sustainable development;
- **Inform** the public and political decision-makers about the status of sustainable development.



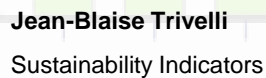
Organisation of Cercle Indicateurs

- **National platform** created in 2005 by the Swiss Confederation, cantons and cities.
- **Management and coordination** : Federal Office for Spatial Development (ARE)
- **Scientific and technical aspects** : Swiss Federal Statistical Office
- Participation is voluntary (cantons and cities)
- **4-years work program** (2014-2017)
- **4-years contracts** with cantons and cities
- Cantons and cities contribute to the **costs**



Meetings with cantons and cities

- **Meetings** 2x per year
- To **improve** the system and **develop / select** new Indicators
- **Decisions** taken by majority
- **Participation** not compulsory
- 2016 : **individual meetings** with the different people responsible for Cercle Indicateurs in cantons and cities





Definition of « Indicators »

- Reflect **behaviour** patterns;
 - Highlight **trends** or situations;
 - Play a role in early **detection**;
 - Provide a basis for **decision-making**;
 - Allow us to describe **phenomena** systematically
 - Create a **link** between data and information, between science, politics and society and between different scientific disciplines (Straddle boundaries)
- Forge a **common understanding of a given phenomenon**



Choice of Indicators

- **~ 30 Themes / Indicators in three dimensions**
(environment, economy and society)
- **Selected** by the participating cantons and cities (meetings)
- **Thematic priorities** have been defined for each aspect of sustainable development (e.g. : air quality, land use, income and wealth distribution, etc.).
- In general, one core indicator for the cities and one for the cantons has been chosen for each of these thematic areas.
- **Similar or different indicators** for the cantons and the cities

Jean-Elie Hervé
Indicators still missing



Examples of Indicators

THEMES	Indicators for cantons	Indicators for cities
Env 4 Energy consumption	Total energy consumption (only monitoring)	Electricity consumption
Env 6 Materials consumption	Urban waste	Urban waste
Econ 5 Cost transparency	No indicator	Application principle of causality
Econ 6 Resource efficiency	No indicator	No indicator
Soc 9 Social welfare	Recipients of social assistance	Recipients of social assistance
Soc 10 Integration	Naturalisations	Naturalisations



Surveys / Results

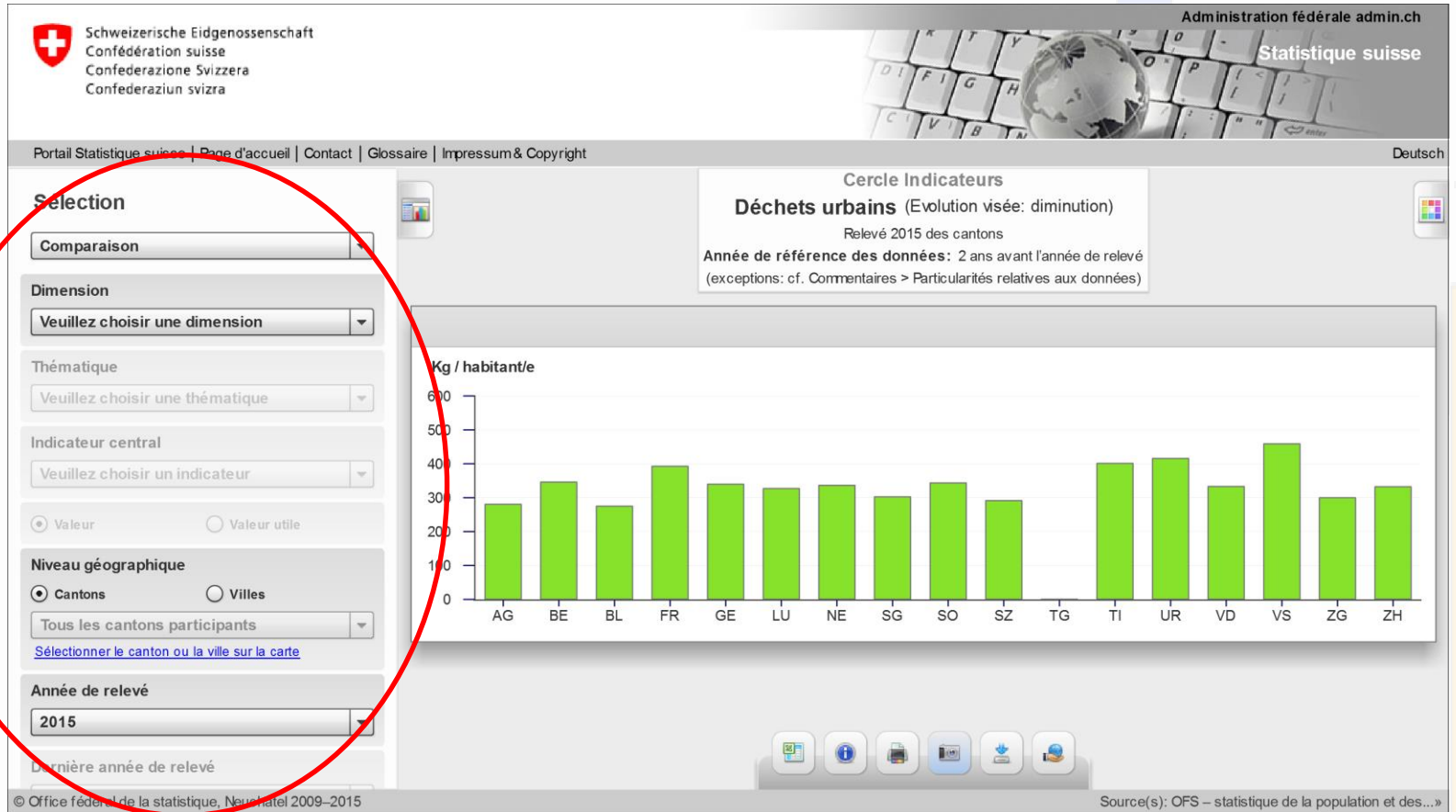
- For cantons: **survey** every 2 years (6 surveys)
- For cities: survey every 4 years (3 surveys)
- ~ 2/3 of data is from official statistics
- ~ 1/3 is collected by cantons and cities (decentralized)

Cantons and cities are responsible for :

- **Analysing** the results;
- **Reflecting** on their strengths and weaknesses;
- **Identifying** possible improvements;
- **Taking** the necessary policy measures when appropriate.



Results : a national Platform



<http://www.bfs.admin.ch/bfs/portal/fr/index/themen/21/04/01.html>



Use of the national Platform

Comparaison ▼

Dimension
Environnement ▼

Thématique
Env 6 : Consommation des matériaux ▼

Indicateur central
Déchets urbains ▼

☒ Valeur ☐ Valeur utile

Niveau géographique
☒ Cantons ☐ Villes
Tous les cantons participants ▼
[Sélectionner le canton ou la ville sur la carte](#)

Année de relevé
2015 ▼

Dernière année de relevé
2015 ▼

Choice

- Profile strengths and weaknesses
- Variation from the average
- Benchmarking
- Monitoring

3 dimensions: Environment, Economy and Society

~ 30 Themes (ex: material consumption)

Indicators (ex: urban waste)

Geographical level (benchmarking + monitoring)

Reference year (benchmarking + monitoring)



Example : Canton of Bern (urban waste)

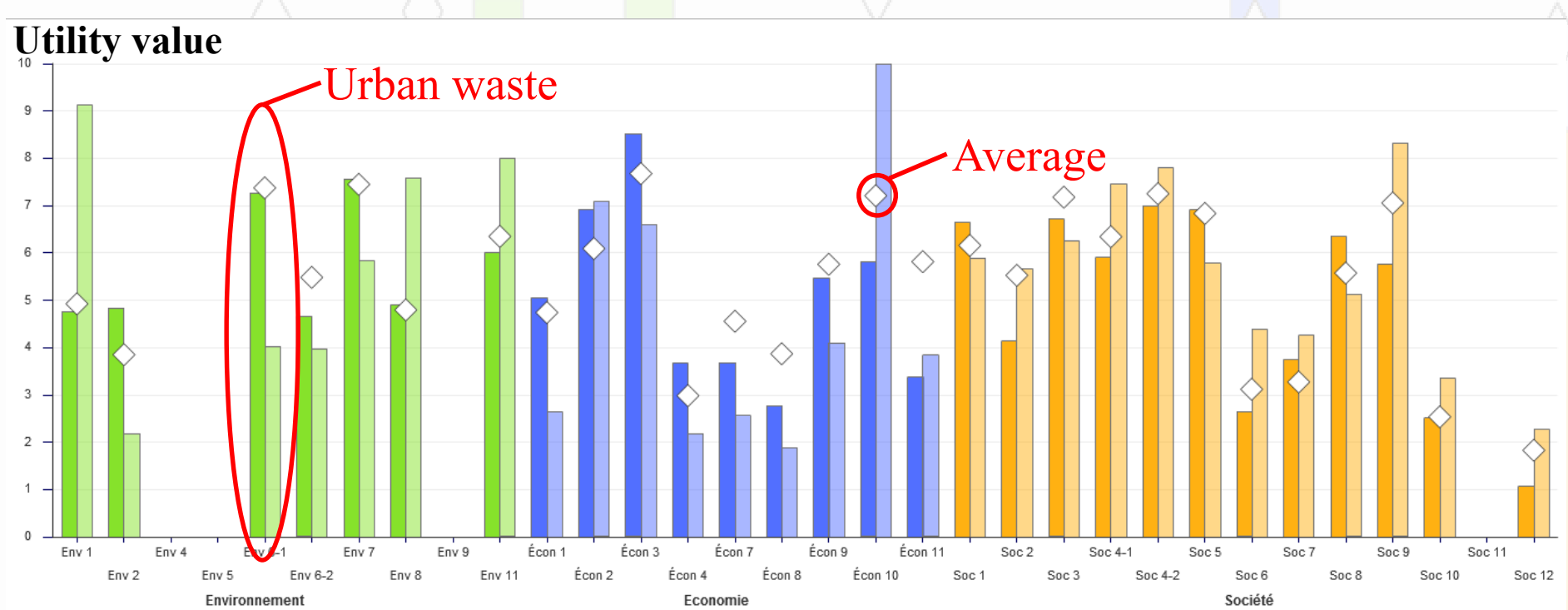
Profile strengths and weaknesses





Example : Canton of Bern VS Canton Valais (urban waste)

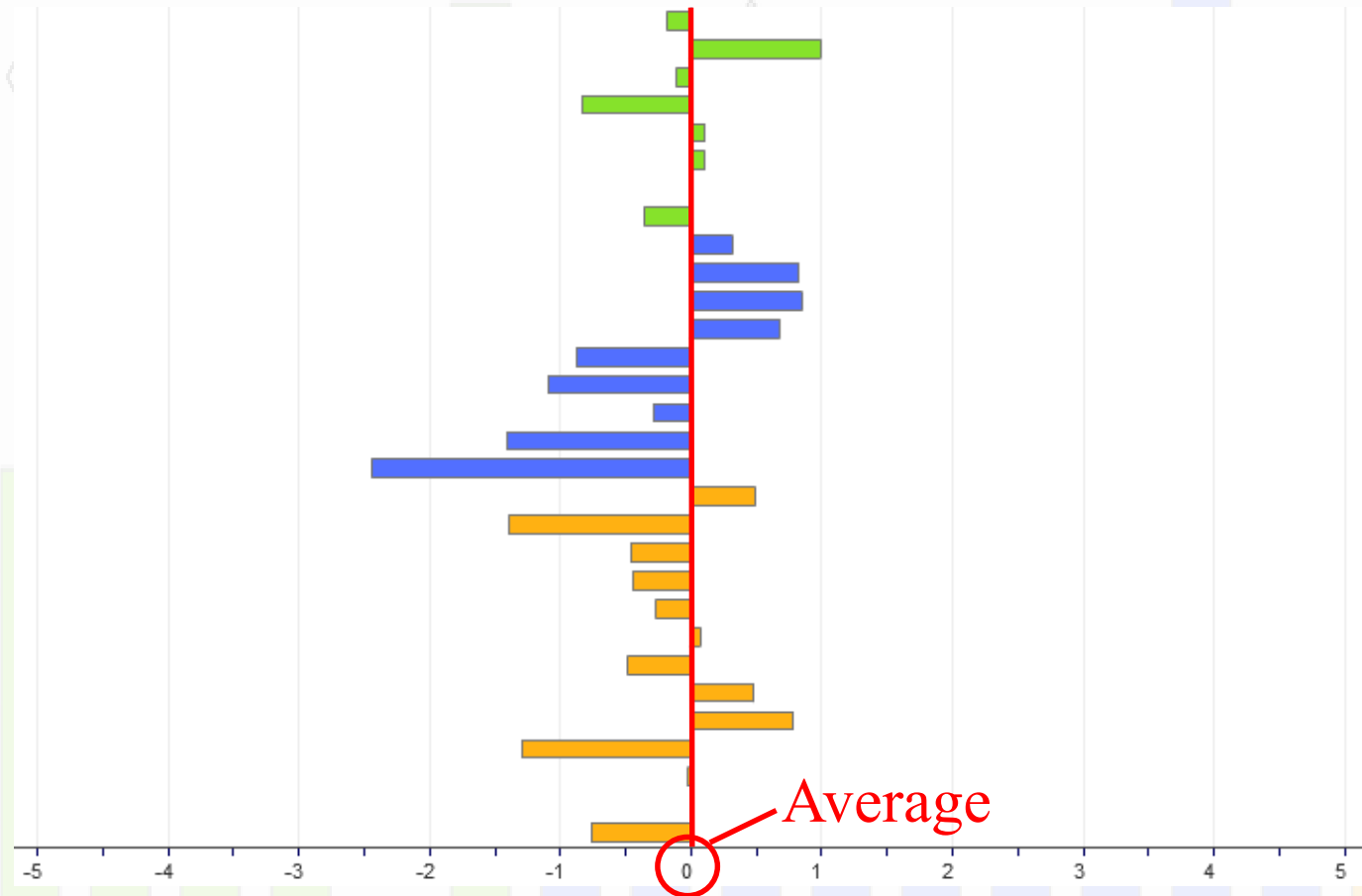
Profile strengths and weaknesses





Example : Canton of Bern (urban waste)

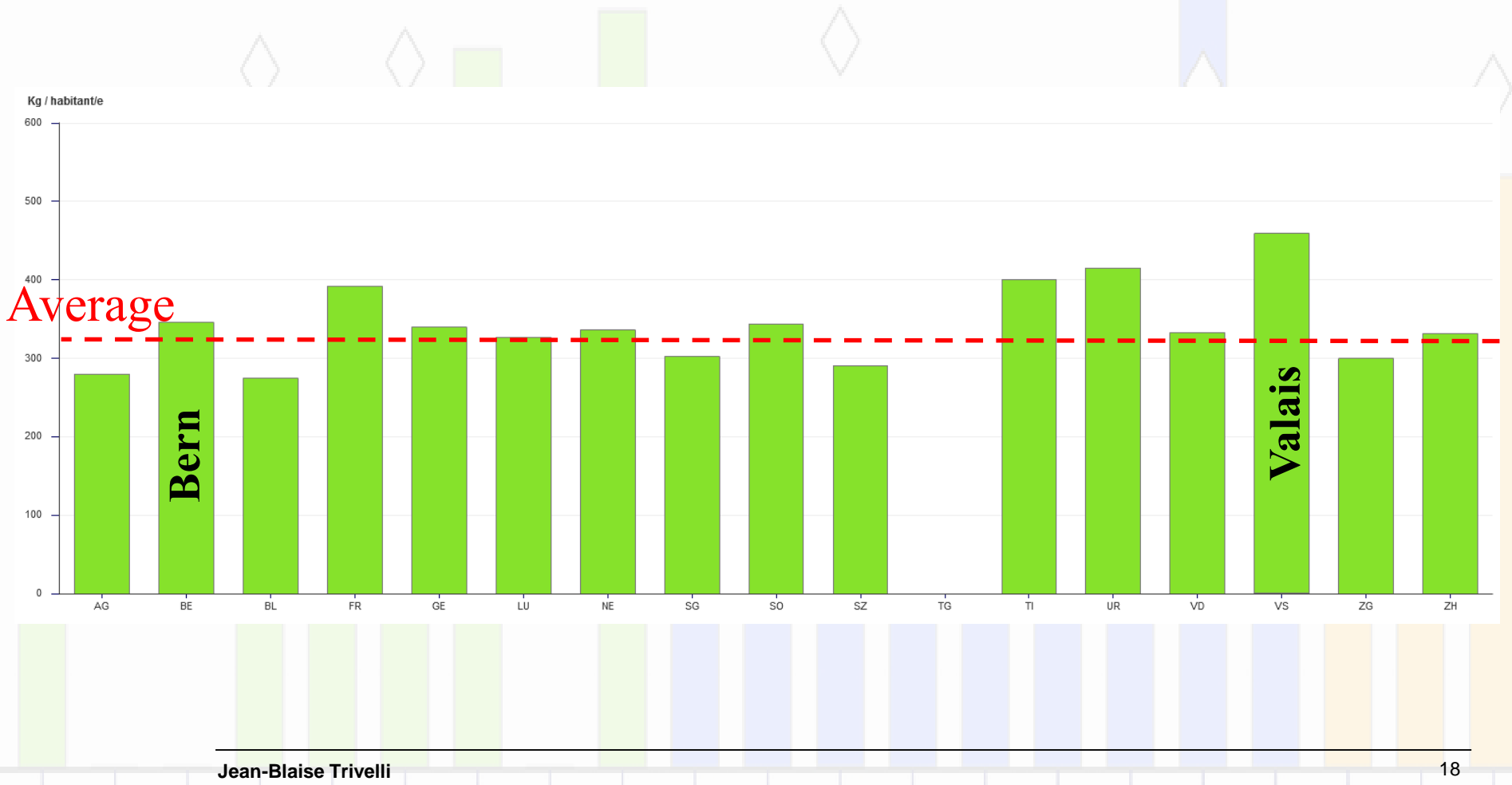
Variation from the average





Example : Canton of Bern (urban waste)

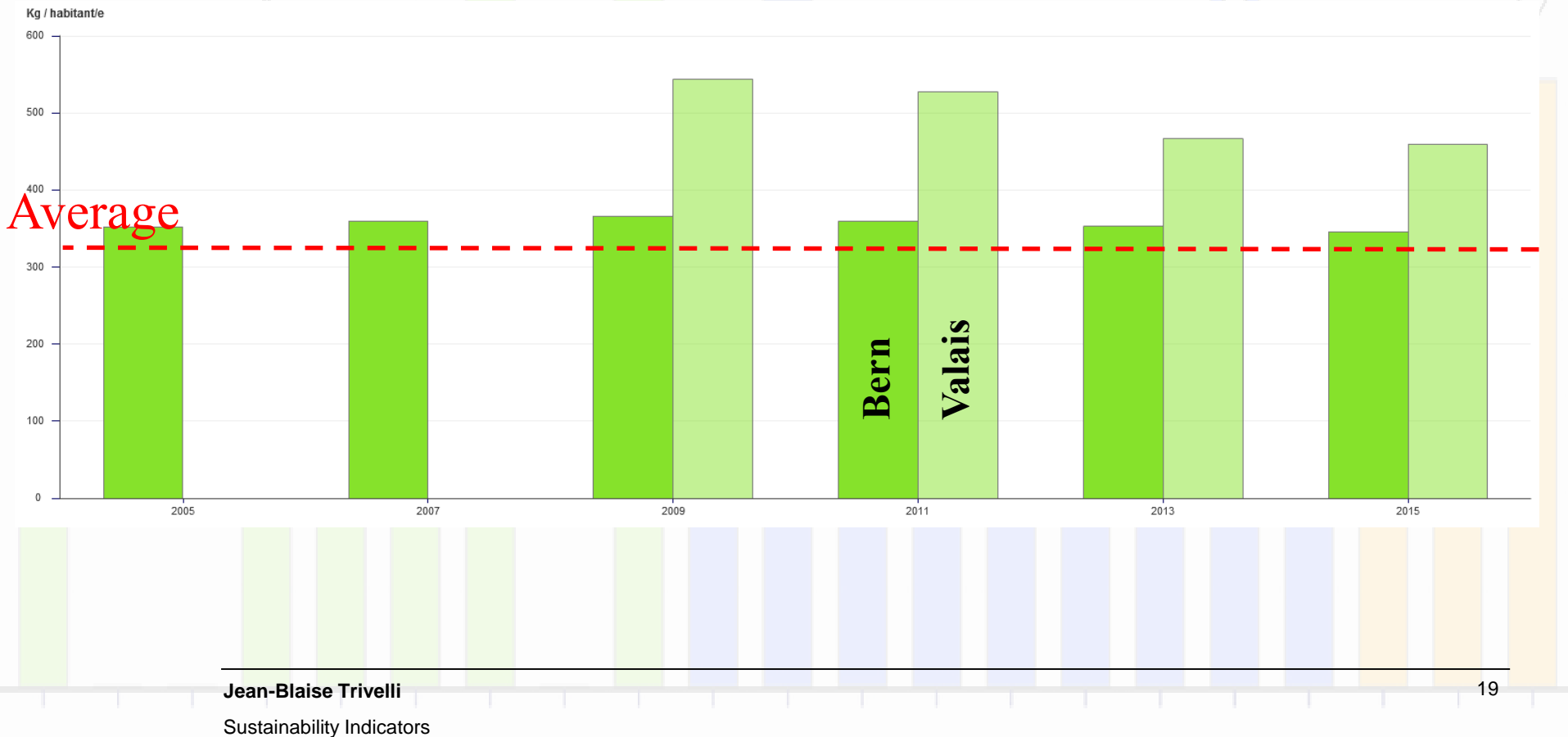
Benchmarking (2015)





Example : Canton of Bern VS Canton Valais(urban waste)

Monitoring (2005 – 2015)



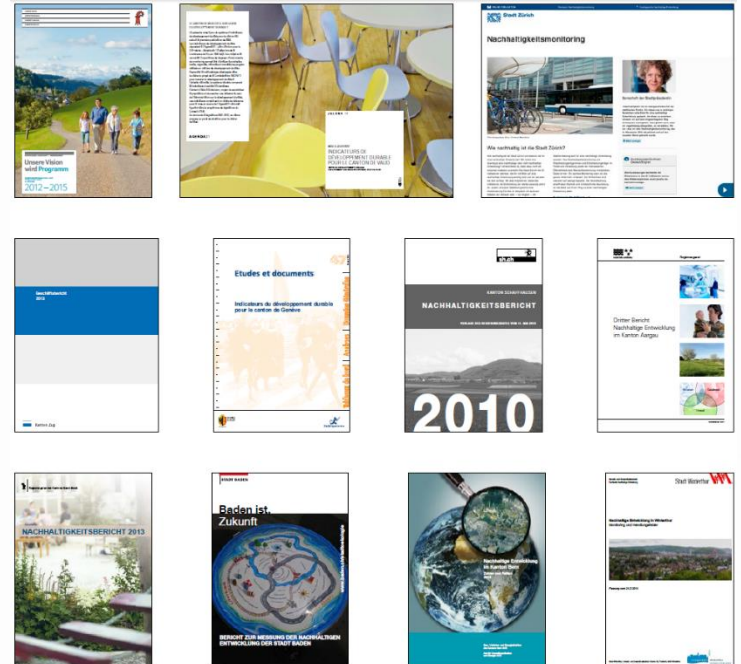


Communication

Cantons and cities use different channels for communication on CI indicators.

Main tools used are :

- Internet;
- Management reports;
- Legislative programs;
- Statistical yearbook;
- Specific publications;
- Presentations;
- Reports on sustainable development.
- Press release by ARE





More information

Federal Office for Spatial Development ARE

www.are.admin.ch/sd (English)

Cercle Indicateurs

www.are.admin.ch/cercleindicateurs (German + French)

Cercle Indicateurs National Platform

www.cercleindicateurs.bfs.admin.ch (German + French)

Monet

www.are.admin.ch/themen/nachhaltig/00268/00551/index.html?lang=en
(English)



THANK YOU FOR YOUR ATTENTION

Jean-Blaise Trivelli, ARE

Jean-Blaise.Trivelli@are.admin.ch